

ATLANTIC BUSINESS PARK

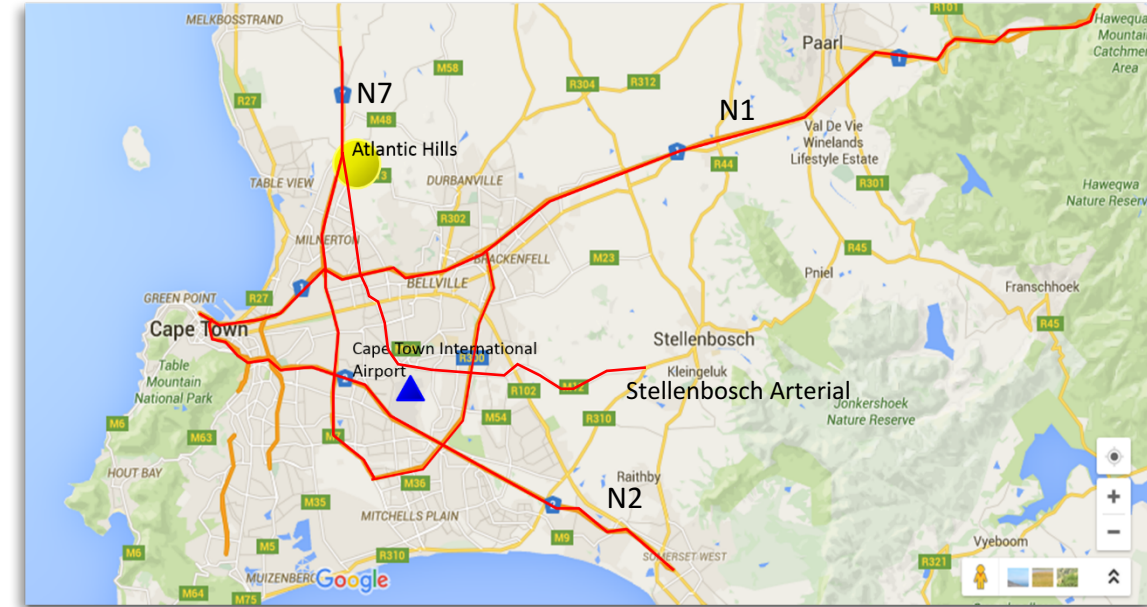
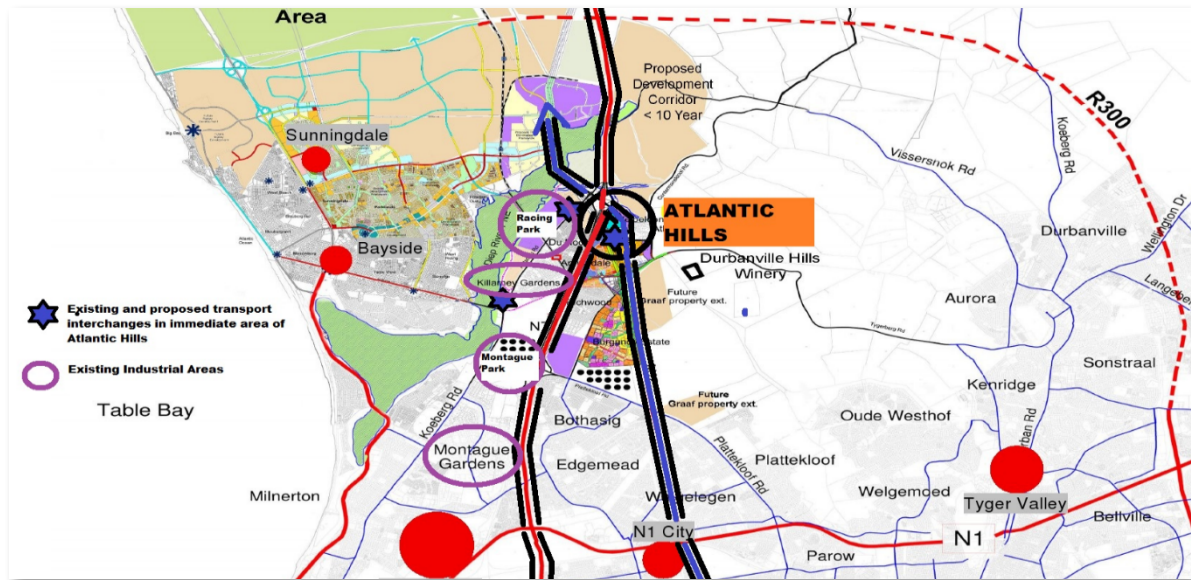
BETA



CONTEXT & LOCATION

Atlantic Park is situated within the City's approved West Coast Development Corridor. It is located close to the intersection of the N7 National Road and the M12 (Potsdam) interchange with the latter road being the major north-south arterial linking neighbourhoods on both sides of the N7.

This prime development overlooking the vineyards of Durbanville will be a neat upmarket industrial park, earmarked for strategic long term leases and the creation of investment grade assets.

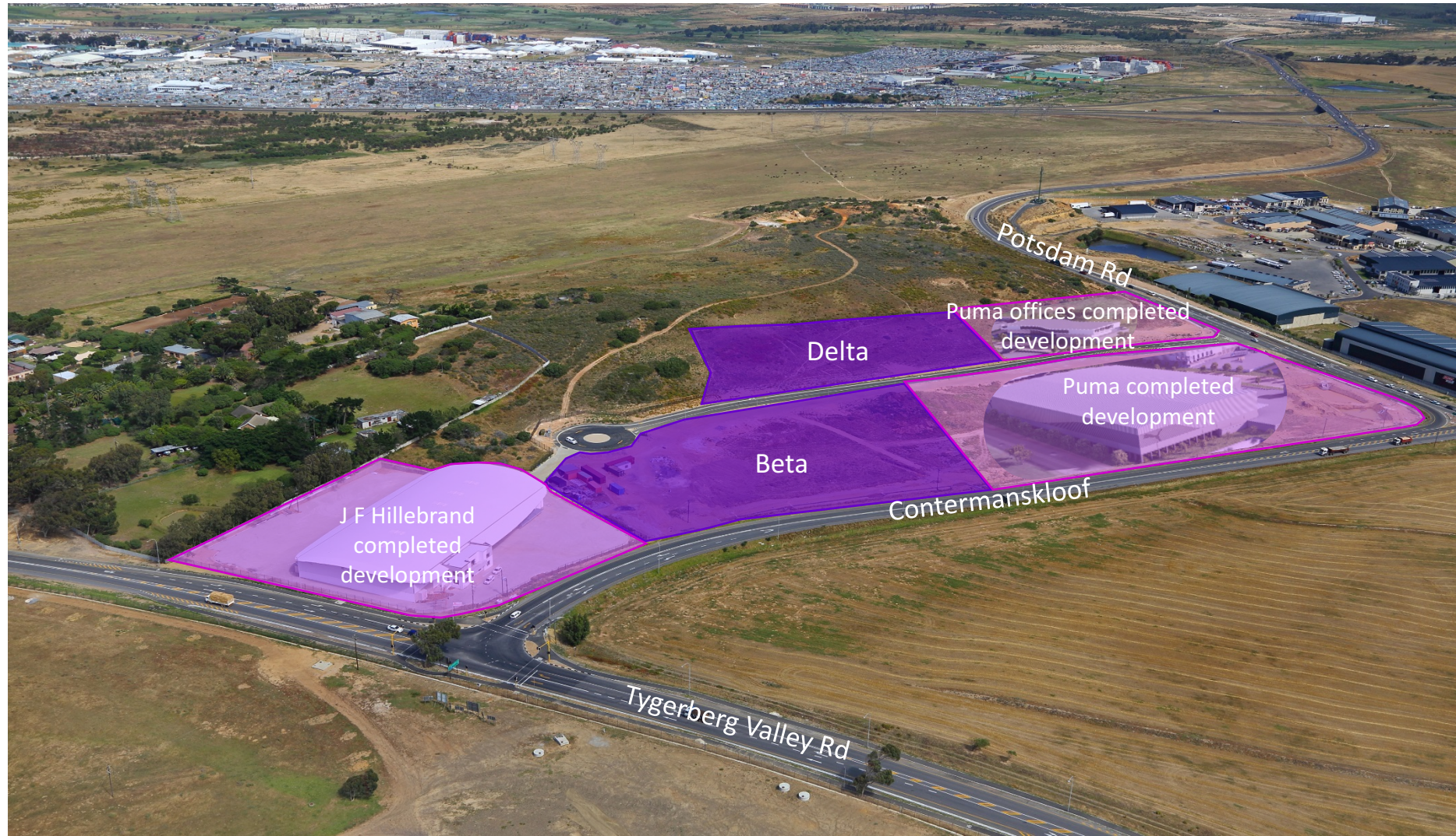


Atlantic Park is zoned for industrial uses with high end logistics facilities either completed or being constructed at this moment on land parcels within the Park.

Its central location to national roads such as the N7 and N1 and connectivity to express distribution roads such as the M12 and Koeberg Roads as well as the Cape Town Port only being +/- 20kms away make Atlantic Park the ideal position for warehousing and distribution type facilities.

DEVELOPMENT SITES

ATLANTIC PARK



INTAPROP

PROPERTY DEVELOPMENT
AND INVESTMENT

DEVELOPMENT SITES

ATLANTIC PARK

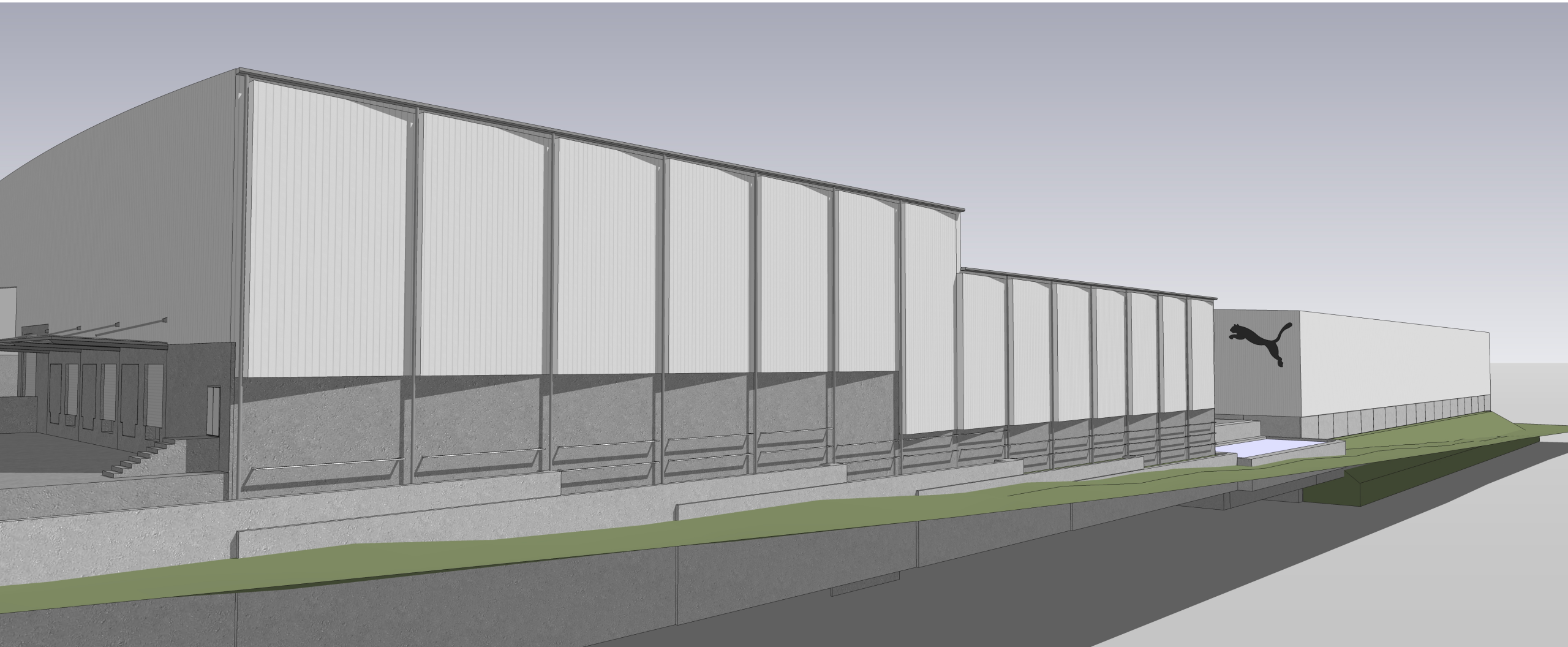


NORTH VIEW



SOUTH VIEW

ATLANTIC PARK

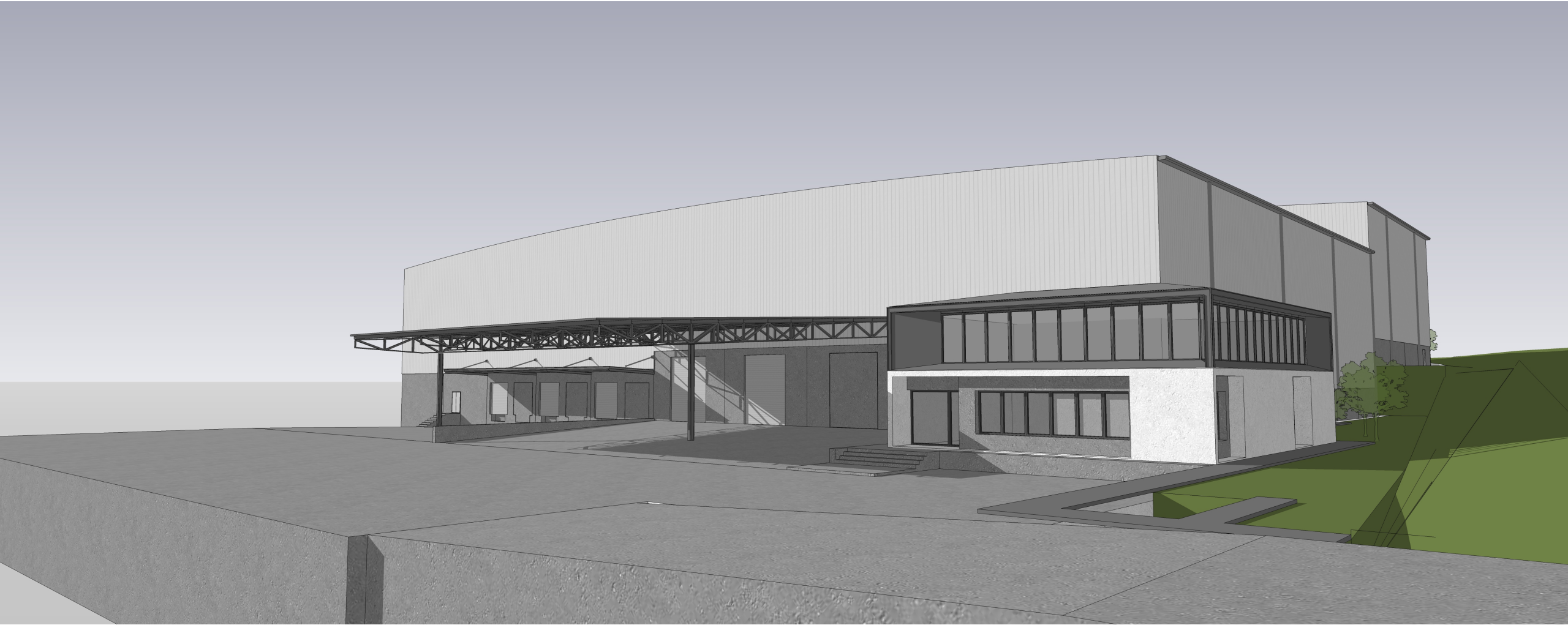


INTAPROP

PROPERTY DEVELOPMENT
AND INVESTMENT

UNIT 1 NORTH PROSPECTIVE

ATLANTIC PARK



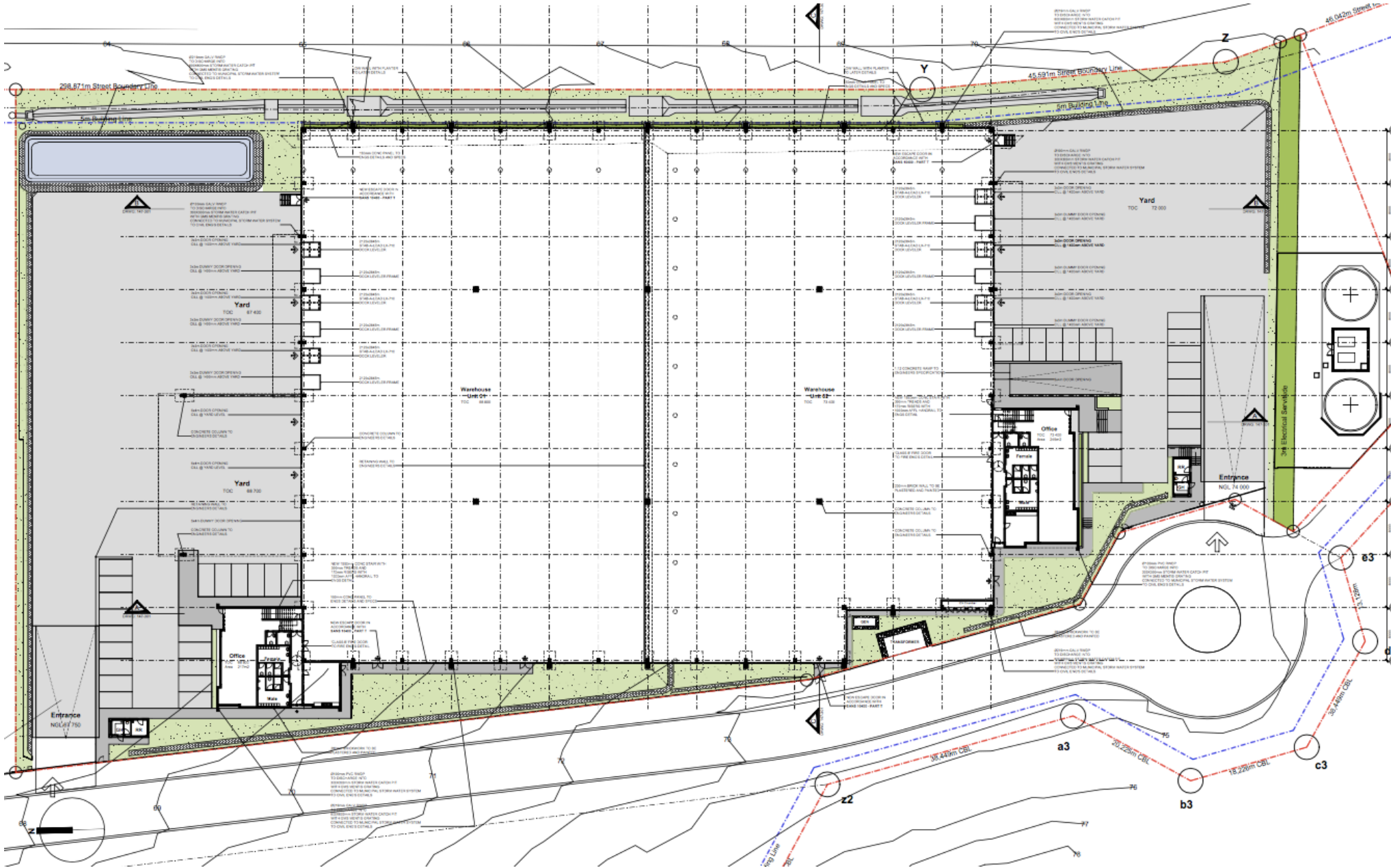
UNIT 2 SOUTH PROSPECTIVE

ATLANTIC PARK



FLOORPLAN

ATLANTIC PARK





Beta: Unit 1

Site Extent	17,995m ²
Zoning	General Industrial
Warehouse (GLA)	4,185m ²
Office (GLA)	449m ²



Beta: Unit 2

Site Extent	17,995m ²
Zoning	General Industrial
Warehouse (GLA)	4,081m ²
Office (GLA)	512m ²



Thank You

Henti van Zyl:
Cel: 083 256 0356
Tel: 011 731 1900
www.intaprop.co.za